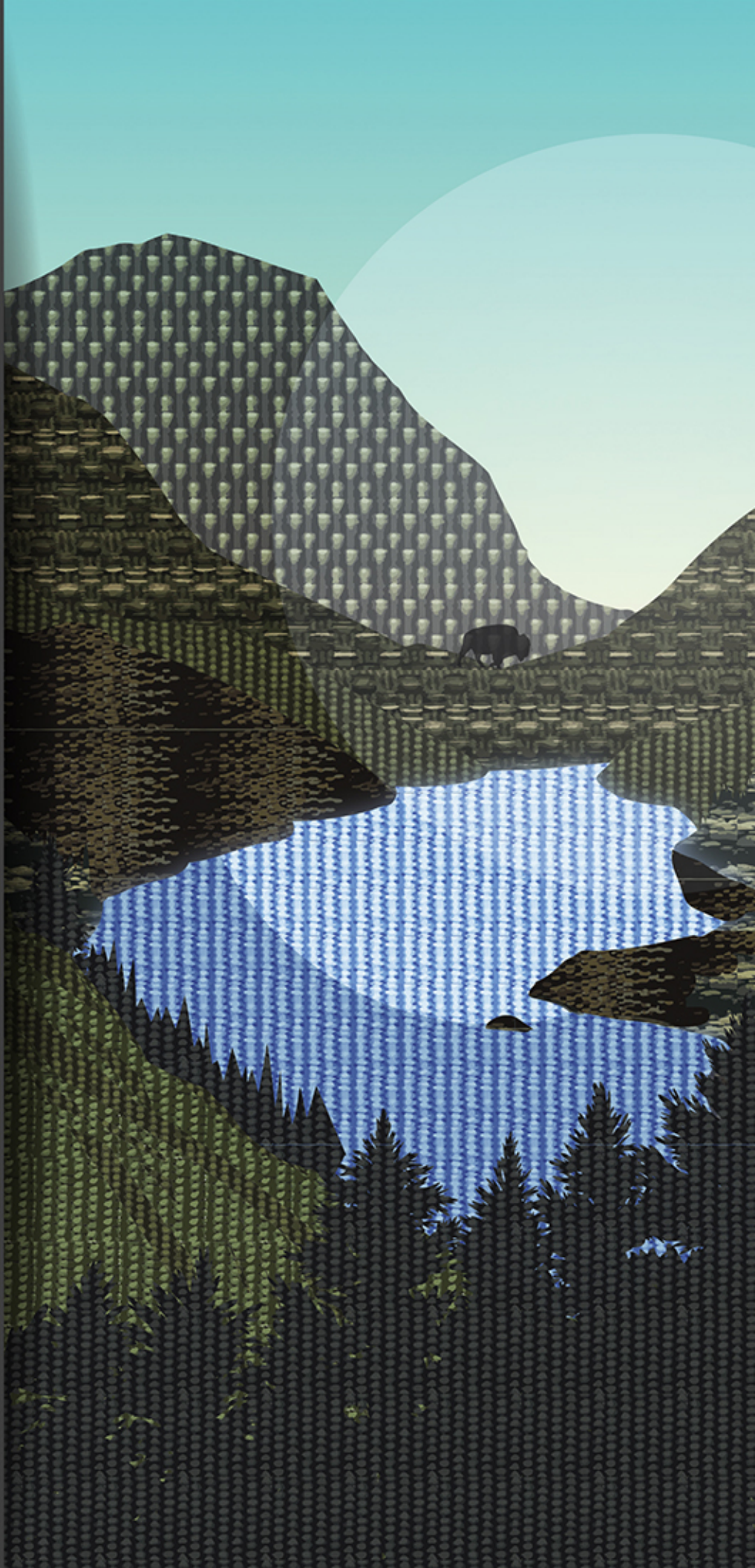


BISON DESIGNS

RELENTLESS INNOVATION & CREATIVITY™



SUMMER 2019
-
SPRING 2020





LAST CHANCE

INSPIRED BY SMOKE JUMPERS, FIREFIGHTERS AND HELI-RAPPELLERS

PICTURED: 38MM LAST CHANCE™ HEAVY DUTY

LAST CHANCE™ HEAVY DUTY COLLECTION

DOUBLE PLY WEBBING REINFORCED WITH 12 FEET OF SEWING WITH A VELCRO CLOSURE



LAST CHANCE™ HEAVY DUTY

- High strength Aircraft Aluminum V-Ring buckle
- Two layers of nylon webbing reinforced with 12 feet of sewing
- Finished with a Velcro closure for a non-slip hold
- Sturdy structure to carry a wide range of accessories
- Buckle available in Black or Gunmetal
- Engravable buckle for custom logos
- Available in 38mm selected solids
- Sizing: Small 32"-36", Medium 36"-40", Large 40"-44", X-Large 46"-50"



LAST CHANCE™ DELTA HEAVY DUTY

- High strength Aircraft Aluminum D-Ring buckle
- Two layers of nylon webbing reinforced with 12 feet of sewing
- Finished with a Velcro closure for a non-slip hold
- Sturdy structure to carry a wide range of accessories
- Buckle available in Black or Gunmetal
- Engravable buckle for custom logos
- Available in 38mm selected solids
- Sizing: Small 32"-36", Medium 36"-40", Large 40"-44", X-Large 46"-50"
- Patent #: D816,545S



LAST CHANCE™ MID DUTY COLLECTION

SINGLE PLY WEBBING WITH A VELCRO CLOSURE



LAST CHANCE™ MID DUTY

- High strength Aircraft Aluminum V-Ring buckle
- Single ply nylon webbing
- Finished with a Velcro closure for a non-slip hold
- Buckle available in Black or Gunmetal
- Engravable buckle for custom logos
- Available in 38mm selected solids
- Sizing: Small 32"-36", Medium 36"-40", Large 40"-44", X-Large 46"-50"



LAST CHANCE™ DELTA MID DUTY

- High strength Aircraft Aluminum D-Ring buckle
- Single ply nylon webbing
- Finished with a Velcro closure for a non-slip hold
- Buckle available in Black or Gunmetal
- Engravable buckle for custom logos
- Available in 38mm selected solids
- Sizing: Small 32"-36", Medium 36"-40", Large 40"-44", X-Large 46"-50"
- Patent #: D816,545S



LAST CHANCE™ LIGHT DUTY COLLECTION

SINGLE PLY WEBBING, "DOUBLE BACK" TO LOCK INTO PLACE



LAST CHANCE™ LIGHT DUTY

- High strength Aircraft Aluminum V-Ring buckle
- Single ply webbing
- Double back to lock into place
- Buckle available in Black or Gunmetal
- Engravable buckle for custom logos
- Available in 38mm selected patterns and solids
- Sizing: Medium 38", Large 42", X-Large 46"



LAST CHANCE™ DELTA LIGHT DUTY

- High strength Aircraft Aluminum D-Ring buckle
- Double back to lock into place
- Single ply webbing
- Buckle available in Black or Gunmetal
- Engravable buckle for custom logos
- Available in 38mm selected patterns and solids
- Sizing: Medium 38", Large 42", X-Large 46"
- Patent #: D816,545S



TWO TONE - LAST CHANCE™

- High strength Aircraft Aluminum V-Ring buckle
- Buckle available with an anodized Cobalt Blue or Burnt Orange center cinch bar
- Single ply webbing
- Available in 38mm solid black webbing
- Sizing: Medium 38", Large 42", X-Large 46"



BTB HEAVY DUTY HAWK™

- Austria Alpin™ Cobra buckle with heavy duty features
- Machined from 7075 structural aluminum, 2 cam release system
- Pull cinch adjustability
- Black Matte finish
- Double layer 38mm nylon webbing
- Available in 38mm selected solids
- Sizing: Small 32"-36", Medium 36"-40", Large 40"-44", X-Large 46"-50"



BTB EAGLE™

- Austria Alpin™ Cobra buckle with heavy duty features
- Machined from 7075 structural aluminum, 2 cam release system
- Constructed with a Double-W sew pattern
- Clipped tip for operator ease
- Black Matte finish
- Available in 38mm selected solids
- Sizing: Medium 38", Large 42", X-Large 46"



BTB FALCON™

- 7075 Aircraft Aluminum with two point release system
- Pull cinch adjustability with a clipped tip for operator ease
- Constructed with a Double-W sew pattern
- Available in 38mm selected solids
- Sizing: Medium 38", Large 42", X-Large 46"



BLACK MOUNTAIN™

- Solid Brass buckle with a matte Nickel finish
- Genuine leather tabs offset 38mm corrugated black webbing
- Extra sturdy webbing allows carrying a wide range of accessories
- Available in 38mm black leather paired with corrugated black webbing only
- Sizing: Fitted, even sizes 28"-42"



LOPRO™ HEAVY DUTY

- Side squeeze buckle, adjustable and high strength; requires two prong release
- Double ply nylon webbing reinforced with 12 feet of sewing
- Finished with a Velcro closure for a non slip hold
- Built with stainless steel and aluminum
- Buckle available in Matte Gray and Black combination
- Available in 38mm selected solids
- Sizing: Small 32"-36", Medium 36"-40", Large 40"-44", X-Large 46"-50"



LOPRO™

- Side squeeze buckle, adjustable and high strength; requires two prong release
- Unmatched low profile buckle
- Built with stainless steel and aluminum
- Buckle available in Matte Gray and Black combination
- Available in 38mm and 30mm selected solids
- Sizing: Medium 38", Large 42", X-Large 46"



GRANITE LOPRO™

- Side squeeze buckle, adjustable and high strength; requires two prong release
- Unmatched low profile buckle
- Built with stainless steel and aluminum
- Available in matte emery gray powder coat finish
- Available in 30mm buckle paired with solid black nylon webbing
- Sizing: Medium 38", Large 42", X-Large 46"



GUIDE BELT™

- 7075 Aircraft Aluminum buckle
- Superior buckle design inspired by the military BDU buckle
- Buckle available in Black or Gunmetal finish
- Engravable buckle for custom logos
- Available in 38mm select solids
- Sizing: Medium 38", Large 42", X-Large 46"
- Patent: D703,096



DANGER™

- Super tech style
- Aluminum V-Ring buckle in Gunmetal finish
- "Danger" cover up to lock into place
- Available in 38mm selected solids
- Engravable buckle for custom logos
- Sizing: Medium 38", Large 42", X-Large 46"



BIWAY™

- Zinc die cast buckle with an antique Matte Gunmetal finish
- Adjustable from both left and right sides
- No sew attachment allows custom sizing
- Available in 38mm selected solids
- Sizing: Medium 38", Large 42", X-Large 46"



KOOL TOOL®

- 16 technical wearable tools
- Field repair made easy
- CR-13 Steel buckle with a Stonewash finish
- Double back to lock in place
- Available in 38mm Corrugated Black
- Sizing: Medium 38", Large 42", X-Large 46"
- Patent: D737,173



BDB - BISON DUTY BELT™

- Aluminum buckle
- Adjustable "loop back" anchor point allows the wearer to change the webbing ends on both the front and back side
- Superior friction; anti-fray tip
- Engravable buckle for custom logos
- Available in 44mm ribbed surface webbing
- Sizing: Medium 38", Large 42", X-Large 46"

PICTURED: 38MM LOPRO IN COYOTE BROWN



TECHNICAL
COMFORTABLE, DURABLE AND RELIABLE WORKWEAR STYLES

CASUAL

COMFORTABLE STYLES FOR EVERYDAY WEAR



PICTURED: 38MM MANZO IN SAND DOLLAR



MANZO™ - 38MM

- Anodized Aluminum buckle
- Lightweight and low profile
- **RIBBON SERIES:** 2 belts in 1, rich ribbon appliqué patterns reverse to solid webbing
- **LATTICE SERIES:** Solid colors with a cross weave pattern
- Available in 38mm lattice solids and reversible patterns
- Sizing: Small 34", Medium 38", Large 42"



MANZO™ - 30MM

- Anodized Aluminum buckle in Matte Gunmetal finish
- Lightweight and low profile
- **RIBBON SERIES:** 2 belts in 1, rich ribbon appliqué patterns reverse to solid webbing
- Available in 30mm reversible patterns
- Sizing: Small 34", Medium 38", Large 42"



GRIDIRON™

- Modern metal buckle with Hybrid Steel and Zinc components
- Streamlined appearance with hidden cam for infinite sizing
- Available in selected 38mm Premium Solids webbing for a softer fashion look and fit
- Sizing: Medium 38", Large 42", X-Large 46"



WEEKENDER™

- High strength Aircraft Aluminum V-Ring buckle
- Finished with distressed leather tab and tip
- Sewn leather tip for a fashionable finish
- Aluminum buckle available in Black or Gunmetal finish
- Ample Pontoon web with ridged edges adds casual style for everyday wear
- Available in 38mm selected pontoon webbing with brown leather tips
- Sizing: Small 34", Medium 38", Large 42", X-Large 46"



REC D™ WITH LEATHER

- Distressed leather tabs add rugged styling
- Antique Silver D-rings are sewn to leather tab with a box style stitch pattern
- Cinch to wear
- Available in 38mm selected patterns and solids
- Sizing: Medium 38", Large 42"



PONTOON LEATHER™

- Town or country styling
- Solid Brass buckle with a Matte Nickel finish
- Distressed leather tabs offset 38mm webbing
- Available in 38mm Brown leather paired with selected patterns and solids
- Sizing: Fitted, even sizes 28"-42"



TAP CAP™

- The function of a bottle opener paired with the fashion of a Millennium buckle
- Bottle opener Aircraft Aluminum buckle available in a Matte Gunmetal finish
- Engravable buckle for custom logos
- Available in 38mm and 30mm patterns and solids
- **30mm Available in Grateful Dead licensed patterns**
- Sizing: Medium 38", Large 42"
- Patent: D622,178



CRESCENT™

- Sleek and smooth Aircraft Aluminum buckle
- Great for laser engraving custom logos
- Buckle available in Black or Matte Gunmetal finish
- Available in 38mm and 30mm patterns and solids
- Sizing: Medium 38", Large 42"



MILLENNIUM™

- Professional looking Aircraft Aluminum buckle while showing your passion for climbing
- Buckle available in Black or Matte Gunmetal finish
- Engravable buckle for custom logos
- Available in 38mm and 30mm patterns and solids
- **30mm Available in Grateful Dead licensed patterns**
- Sizing: Medium 38", Large 42"



STEALTH™

- Anodized Aluminum buckle available in Black or Matte Gunmetal finish
- Multiple flat facets allow for optimal engraving space for custom logos
- Available in 38mm and 30mm patterns and solids
- Sizing: Medium 38", Large 42"



SUBTLE CINCH™

- 6063 Aircraft Aluminum buckle
- Featherweight, low profile buckle
- Buckle available in Black or Matte Gunmetal finish
- Engravable D-Rings for custom logos
- Super secure with non-slip holding power
- Available in 38mm and 30mm selected solids
- Sizing: Medium 38", Large 42"



PURE TREK™

- The perfect belt for wherever your trek takes you
- Aluminum buckle available in Black or Gunmetal finish
- Uniquely styled asymmetrical shape
- Pull tab designed for ease of loading
- Lightweight contoured buckle
- Engravable buckle for custom logos
- Available in 30mm patterns and solids
- Sizing: Medium 38", Large 42"



CRESCENT™ MONEY BELT

- Travel securely in style
- Stash your cash safely in 30" x 1.5" concealed zipper pouch
- Aluminum buckle available in Black or Gunmetal finish
- Engravable buckle for custom logos
- Available in 38mm selected patterns and solids
- Sizing: Medium 38", Large 42"



LAST CHANCE™ DELTA MONEY BELT

- High strength Aircraft Aluminum D-Ring buckle
- Stash your cash safely in 30" x 1.5" concealed zipper pouch
- Available in Black and Gunmetal finish
- Engravable buckle for custom logos
- Available in 38mm selected patterns and solids
- Sizing: Medium 38", Large 42", X-Large 46"
- Patent: D816,545



KEY LOCK™

- Upgrade your active lifestyle pant belt
- Low profile Delrin buckle
- Perfect sport belt that moves with you
- Belt beneath a belt (i.e. hip packs and backpacks)
- Airport friendly
- Available in 38mm solids and 38mm solid elastic
- Sizing: Medium 38", Large 42"



ELLIPTAGON™

- Delrin Tri-glide buckle
- Lightweight and durable
- Airport friendly
- Available in 38mm and 30mm patterns and solids
- 30mm Available in Grateful Dead licensed patterns
- Sizing: Medium 38", Large 42"



T-LOCK™

- Simple, rugged and easily adjustable
- Delrin cam lock buckle
- Airport friendly
- Engravable buckle for custom logos
- Available in 38mm selected solids and 30mm selected solids and patterns
- Sizing 30mm: Medium 38", Large 42"
- Sizing 38mm: Medium 38", Large 42", X-Large 46"



T-LOCK™ MONEY

- Stash your cash safely in a concealed zipper pouch
- 30mm concealed pouch: 28" x 1.25"
- 38mm concealed pouch 30" x 1.5"
- Delrin cam buckle won't set off metal detectors
- Engravable buckle for custom logos
- Available in 38mm selected solids and 30mm selected patterns and solids
- Sizing 30mm: Medium 38", Large 42"
- Sizing 38mm: Medium 38", Large 42", X-Large 46"



CARBONATOR™

- Buckle woven in 100% Carbon Fiber
- Stronger than steel, lighter than aluminum
- Hottest in material; coolest in fashion
- Airport friendly
- Available in 30mm patterns and solids
- Sizing: Medium 38", Large 42"
- Patent D586,259



INGEO MILLENNIUM™

- Great buckle for fashion while still being conscious of the environment
- Millennium buckle design manufactured from 100% corn
- Available in 30mm bamboo & soy webbing
- Sizing: Medium 38", Large 42"



CAM LOCK™

- Reverse engineering creates a cam locking mechanism
- Pry lever mechanics are hidden on the back side of the buckle, Delrin buckle
- Attractive, non-metallic face
- Airport friendly
- Available in 30mm selected patterns and solids
- Sizing: Medium 38", Large 42"
- Patent D703,581



GARRISON™

- Traditional Delrin pass through buckle
- Open face styling
- Low Profile and lightweight
- Airport friendly
- Available in 30mm selected patterns and solids
- Sizing: Medium 38", Large 42"



ELLIPSE™

- Elliptical, Delrin Tri-glide buckle
- A sport belt with style
- Airport friendly
- Available 25mm patterns and stripes
- Also Available in the Grateful Dead Dancing Bear licensed pattern
- Sizing: Medium 38", Large 42"



SLIDER™

- Delrin Tri-glide buckle
- Airport friendly
- Available 25mm patterns and stripes
- Also Available in the Grateful Dead Dancing Bear licensed pattern
- Sizing: Medium 38", Large 42"

PICTURED: 38MM KEY LOCK WITH ELASTIC WEBBING & LUGGAGE TAG



AIRPORT FRIENDLY

NON-METALLIC BUCKLES HELP YOU MOVE QUICKLY THROUGH SECURITY CHECKPOINTS

LEATHER

HANDCRAFTED IN LONGMONT, COLORADO USA



PICTURED: 30MM STANDARD & 38MM BOX CANYON



Black with Antique Silver Buckle



Brown with Antique Bronze Buckle



Black with Matte Black Buckle



Cognac with Antique Bronze Buckle



BOX CANYON™ COMFORT

- Square lines, dark tones
- 100% Genuine distressed leather with two-tone pull up
- Matte finish Zinc buckles
- Buckle is sewn in with double accent stitching
- Available in 38mm leather styles:
 - Black available with Matte Black buckle
 - Black available with Antique Silver buckle
 - Brown available with Dark Antique Bronze buckle
 - Cognac available with Dark Antique Bronze buckle
- Handcrafted in Longmont, CO USA
- Sizing: Fitted, even sizes 30"-42"

- 100% Genuine distressed leather with two-tone pull up
- Matte finish Zinc buckles
- Buckle is sewn with double accent stitching to a durable piece of elastic
- Elastic adds stretch for everyday comfortable wear
- Available in same leather/buckle combinations as classic Box Canyon™
- Handcrafted in Longmont, CO USA
- Sizing: Fitted, even sizes 30"-42"



SHACKLETON™

- Tanned for years of rugged wear
- 100% Genuine North American cowhide
- Buckle is sewn in with double accent stitching
- Available in 38mm and 32mm leather styles: Black available with Antique Silver buckle, Brown available with Solid Brass buckle
- Handcrafted in Longmont, CO USA
- Sizing: Fitted, even sizes 30"-42"



HIGH ROLLER™

- Classic brass roller buckle
- Styling and unique contoured buckle
- Solid brass Chicago screws allow for buckle changes
- 100% Genuine North American cowhide
- Available in 30mm leather styles: Black available with Antique Silver buckle, Brown available with Solid Brass buckle
- Handcrafted in Longmont, CO USA
- Sizing: Fitted, even sizes 30"-42"



BISON STANDARD™

- Full grain water buffalo leather
- Center bar buckle with Antique Silver finish is sewn in with single accent stitching
- Available in 38mm and 30mm leather styles: Black & Brown
- Handcrafted in Longmont, CO USA
- 30 Sizing: Fitted, even sizes 28"-42"
- 38 Sizing: Fitted, even sizes 30"-42"



DURANGO CORDED™

- Heavy duty cord sew lines for added strength
- Solid Brass Chicago screws allow for buckle changes
- 100% Genuine North American cowhide
- Buckle available in an Antique Nickel finish
- Available in 38mm leather styles: Black & Brown
- Handcrafted in Longmont, CO USA
- Sizing: Fitted, even sizes 30"-42"



CAST AWAY™

- Fisherman's favorite buckle
- Solid brass Chicago screws
- 100% Genuine North American cowhide
- Solid brass buckle with an Antique Silver finish
- Available in 38mm Brown leather
- Handcrafted in Longmont, CO USA
- Sizing: Fitted, even sizes 30"-42"



ROUGH CUT™

- Rugged top grain cowhide
- Solid brass Chicago screws allow for buckle changes
- 100% Genuine North American cowhide
- Available in 38mm leather styles: Black available with Antique Silver buckle, Brown available with Solid Brass buckle
- Handcrafted in Longmont, CO USA
- Sizing: Fitted, even sizes 30"-42"



RAWHIDE™

- 100% Genuine North American cowhide
- Antique Silver buckle is sewn in with double accent stitching
- Available in 38mm and 30mm Golden Hillbilly leather
- Handcrafted in Longmont, CO USA
- Sizing: Fitted, even sizes 30"-42"



EMBOSSED LEATHER

- Five unique, embossed patterns available in four colors
- Patterns: Basket Weave, Pine Cone, Double Diamond, Concho, and Oak Leaf
- Personalization available in Oak Leaf pattern ONLY
- Colors: Natural, Mahogany, Black and Antique
- Solid brass snaps allow for buckle changes
- 100% Genuine North American cowhide
- Solid Brass buckle
- Sizing: Fitted, even sizes 24"-52"



OFFICIALLY LICENSED PRODUCTS

★ FOR THE BOY SCOUTS OF AMERICA ★



Officially licensed product for the Boy Scouts of America ®

- Custom belts and accessories
- Bison has been manufacturing customized webbing for the Boy Scouts of America for more than a decade
- We have developed a program that allows camps to have webbing made with their logos for as little as 500 yards, or chose from one of our in-line belts.
- Laser engraving is available on selected Bison buckles - add your camp logo!
- Check out our wide assortment of engravable carabiners and key accessories.
- Designed, cut, and sewn in the USA!
- To inquire call 800-536-2476 or email sales@bisondesigns.com

Bison Designs | www.shopbisondesigns.com | 800-536-2476

A BISON

PRIVATE LABEL PROGRAM MAKES THE DIFFERENCE

Build brand recognition and loyalty with your own line of products.

Phone: (800) 536-2476 | Email: sales@bisondesigns.com

25+ YEARS
EXPERIENCE

100%
CONTROL OF
CUSTOMIZATION

#1 PRIORITY
CUSTOMER
SERVICE

CUSTOM BUCKLES

Design your own custom buckle or engrave your logo on a current in-line buckle

CUSTOM WEBBING

Custom logo or concept created into a jacquard webbing or ribbon pattern

CUSTOM HANGERS

Branded hang tags available to match your concept. Available with co-branding or 100% custom

CUSTOM LABELS

Branded sew in tags, price tags and UPC tag options available to match your concept

CUSTOM DISPLAYS

Branded belt rack, and accessory displays available



We put your logo or design on our products!
Belt Buckles • Hang Tags • Sew In Tags • Custom Webbing • Rack Headers
Want something 100% custom? We do that too!

*There are quantity requirements depending on the custom option chosen.

KEY ACCESSORIES

ALUMINUM, STAINLESS STEEL, PLASTIC, AND WOODEN ACCESSORY STYLES



PICTURED: CLASSIC WOODY, WOODY WAVE, AND COBRA WOODY



8CM CLASSIC WOODY



7CM COBRA WOODY



WOODY WAVE

WOODY CARABINERS

MADE OF REPURPOSED WOOD

- Escape anodized aluminum with organic naturally made wooden carabiners.
- Bison's Woody Carabiners support and promote the importance of renewable resources for accessories
- These wooden carabiners are designed to carry light accessories up to 10lbs.
- Repurposed carabiners are available in 3 popular Shapes: 8cm Woody Classic, Woody Wave, and 7cm Cobra Woody
- All Woody Carabiners are available in Rasta and Blue
- Woody Carabiners are available to be engraved
- Packaging is made of Eco-friendly paper.



KOOL TOOL® CARABINER SAE (CR-13 STEEL)



KOOL TOOL® KLIP SAE (CR-13 STEEL)



KOOL TOOL® BIKER - METRIC (CR-13 STEEL)



KOOL TOOL® MICRO - BARRACUDA - METRIC (CR13-STEEL)



KOOL TOOL® MICRO - PIRANHA - SAE (CR13-STEEL)



DIAMOND 4CM



DIAMOND 7CM



DIAMOND 8CM



SWISH CLIP 4CM



SWISH CLIP 5CM



SWISH CLIP 6CM



SWISH CLIP 7CM



Z-LINK 4CM



Z-LINK 5CM



Z-LINK 6CM



Z-LINK 7CM



STANDARD 5CM



STANDARD 8CM



ROUND 4CM



PAKKA WOOD



CARABINER & OPENER



C-CLIP



CONTOUR WIRE GATE



CYCLOPS 8CM



FLAT LARGE D



FLAT MICRO D



S-SHAPE



SWISH CLIP 4CM



Z-LINK 7CM



8CM PLASTIC DIAMOND



DIAMOND WHISTLE



DIAMOND WHISTLE - GLOW IN THE DARK



STRONG HOLED



SURVIVAL

PARACORD AND OTHER SURVIVAL ACCESSORIES



PICTURED: NO TRACE FIRE PLACE AND SIDE RELEASE COBRA



BACKCOUNTRY - SURVIVAL POD™

- Basic tools to survive
- 11ft. of 550 paracord
- (1) 1" Sharpe Eye™ knife and sheath
- (1) Convenient 1" rifle sling clip
- (1) 1" Fire stick flint
- (1) 6" Jute firestarter tinder
- Patent: D684,445
- (1) 4" Strip duct tape
- (1) 1½" Hacksaw blade
- 10ft. Fishing line
- (1) #8 Live bait hook
- (1) #6 Live bait hook
- (2) Split shot, tin, removable
- Available in Black or Orange



XSTREAM - SURVIVAL POD™

- Tackle your survival situation
- A fisherman's favorite key fob complete with 16 tools
- 12ft. of 550 paracord
- (1) 1" Sharpe Eye™ knife and sheath
- (1) 4cm D-shaped carabiner
- (1) 6" Jute firestarter tinder
- Patent: D684,445
- Available in Black or Orange
- (1) 6" Strip duct tape
- (1) Spoon Lure
- (1) Gram reusable hot glue
- (1) 12in. green snare wire, steel
- (1) 15ft. Fishing Line
- (1) #8 Live bait hook
- (1) #6 Live bait hook
- (2) Tin Split Shot



CLASSIC - SURVIVAL POD™

- What it takes to survive
- Complete with 5 tools
- 4ft. of 550 paracord
- (1) 1" Sharpe Eye™ knife and sheath
- Patent: D684,445
- Available in Black or Orange
- (1) 1" Fire stick flint
- (1) 6" Jute firestarter / tinder
- (1) 4" Strip duct tape
- All wrapped in a compact take anywhere zipper pull



BULK PARACORD - 30FT

- 30ft. Bulk commercial grade 550 paracord
- A must for your pack
- Available in Black, Multi Cam, Orange and Dark Olive



BULK PARACORD - 100FT

- 100ft. Bulk commercial grade 550 paracord
- Never venture out without it
- Available in Black, Multi Cam and Orange



NO TRACE FIRE PLACE™

- Help protect the ground from fire damage
- Fire resistant up to 800°F
- Step 1: Collect Soil
- Step 2: Build Mound Fire
- Step 3: Burn to Ash
- Step 4: Return Soil and Ash
- Created in coordination with the Leave No Trace Center for Outdoor Ethics



HOO KM®

- Lightweight
- Fast and easy to use
- Carabiner loop and hook tie down system
- Snap in, snap out
- 30lb. working weight
- Available in 3 lengths: 4ft. - Yellow, 8ft. - Orange, 12ft. - Red
- Patent D642,895



CLIP CLEAT

- Create a tie down anywhere
- No more knots
- Secure cargo when camping, moving, or just about anything
- 10ft. of 4mm cord
- 120lb. working weight
- Patent: D629,287

Note: When buying paracord bracelets they will not stretch over time. Bracelets that get wet can shrink.

PARACORD BRACELET SIZING

Youth: Max 7" Wrist | Small: Max 8" Wrist | Medium: Max 9" Wrist | Large: Max 10" Wrist

SUN TONE ASSORTMENT	EARTH TONE ASSORTMENT	CAMO ASSORTMENT



SIDE RELEASE COBRA

- Reversible; popular low profile buckle
- Untie for 7-10ft. of 550 paracord
- Available in 1 & 2 Colors
- Available in color assortments: Black, Earth Tone, Sun Tone, Camo
- Sizing: Youth, Small, Medium, Large
- Patent: D691,910



CONTOUR TOGGLE COBRA

- Adjustable fit, one size fits all
- Super low profile
- Contoured rubber toggle for safe release
- Untie for 7-10ft. of 550 paracord
- Available in 1 & 2 Colors
- Available in color assortments: Black, Earth Tone, Sun Tone, Camo
- Patent: D772,521 & D697,447



FLINT & KNIFE

- Adjustable fit, one size fits all
- 3 in 1 survival kit
- Toggle is a 1" flint fire starter
- Stainless steel hidden knife with unique 1" blade and circle handle
- Sharpe Eye™ knife buried inside 15-17ft. of 550 paracord
- Available in Black
- Patent: D772,521 & D684,445



WHISTLE

- Be prepared with a whistle
- Cobra braid
- Side release buckle with built in whistle
- Untie for 8-11ft. of 550 paracord
- Sizing: Small, Medium, Large
- Available in Black



GLOW IN THE DARK

- Unique paracord glows in the dark
- Cobra braid
- Untie for 7-10ft. of 550 paracord
- Sizing: Youth, Small, Medium, Large
- Patent: D691,910



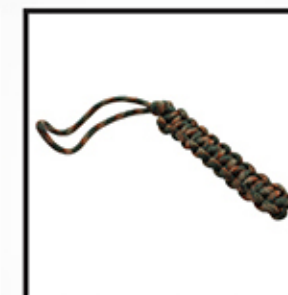
SINGLE SHOT™

- 6mm bullet toggle
- Cobra braid
- Untie for 8-11ft. of 550 paracord
- Sizing: Small, Medium, Large
- Available in: Coyote and Dark Olive
- Patent: D697,447 & D722,521



SHACKLE BUCKLE

- A sailor's favorite bracelet
- Bomb proof buckle
- Cobra braid
- Untie for 8-11ft. of 550 paracord
- Sizing: Small, Medium, Large
- Available in Black, Dark Olive and Midnight Blue



KNIFE LANYARD

- Cobra braid grip
- Remote retrieve, quick draw
- Untie for 4-6ft. of 550 paracord
- Available in 1 & 2 colors
- Available in color assortments: Black, Earth Tone, Sun Tone, Camo



LANYARD

- Cobra style braid
- Breakaway closure
- Swivel eye hook
- Untie for 6ft. of 550 paracord
- Available in single color assortments: Black, Earth Tone, Sun Tone, Camo



MONKEY FIST LANYARD

- Retrieve your keys or knife without having to reach into your pocket
- Ancient knot with ¾" steel ball
- Adjusts from 3-7in.
- Available in single color assortments: Black, Earth Tone, Sun Tone, Camo



MONKEY FIST - ZIPPER PULL

- Monkey fist knot provides a great handle for a zipper pull
- Sold as a 2 piece pack
- Untie for 13in. of 550 paracord
- Available in single color assortments: Black, Earth Tone, Sun Tone, Camo



STANDARD KEY RING

- Available in Cobra, Round & Square Braids
- Perfect for duffel's, coats, and car keys
- Untie for 4-6ft. of 550 paracord
- Available in 1 & 2 colors
- Available in color assortments: Black, Earth Tone, Sun Tone, Camo



BOOT LACES

- 10 times stronger than common laces
- New knot style diagram included
- (2) 3ft. laces of 550 paracord
- Available in Black, Tan and Dark Olive



DO IT YOURSELF KITS

- DIY BRACELET**
 - 14ft. of 550 paracord
 - Low profile side release buckle
 - Step by step braiding instructions
 - Available in 1 & 2 colors
 - Available in color assortments: Black, Earth Tone, Sun Tone, Camo
- DIY LANYARD**
 - 7ft. of 550 paracord
 - Break away neck closure
 - Swivel eye hook
 - Step by step braiding instructions
 - Available in single color
 - Available in color assortments: Black, Earth Tone, Sun Tone, Camo
- DIY ZIPPER PULL**
 - 6ft. of 550 paracord
 - (2) 1½" black split rings
 - Step by step braiding instructions
 - Available in single color
 - Available in color assortments: Black, Earth Tone, Sun Tone, Camo

BISON CHALK

100% NATURAL MAGNESIUM CARBONATE WITH NO ARTIFICIAL FILLERS



PHOTO CREDIT: ADAM STROUP WITH BIG DIPPER CHALK BAG AND SLIDER IN RASTA



MINI-BISON CHALK BALL®

- 2oz. very fine, pulverized competition chalk
- Fits smaller chalk bag
- Exclusive mesh dispenses just the right amount
- Improves grip, prevents spills and lasts 5x longer than loose chalk
- 100% natural magnesium carbonate with no artificial fillers
- Suppresses dust to keep climbing walls clean and gym air clear



STANDARD-BISON CHALK BALL®

- 3oz. very fine, pulverized competition chalk
- Fits larger bags for longer routes
- Exclusive mesh dispenses just the right amount
- Improves grip, prevents spills and lasts 5x longer than loose chalk
- 100% natural magnesium carbonate with no artificial fillers
- Suppresses dust to keep climbing walls clean and gym air clear



REBALL™-BISON CHALK BALL®

- 2oz. refillable chalk ball
- Fits Bison Block Chalk™ or Competition Chalk™
- Convenient cord lock closure
- 100% natural magnesium carbonate with no artificial fillers
- Suppresses dust to keep climbing walls clean and gym air clear
- Available in white, assorted solids, assorted patterns, and Colorado Reball™



REBALL™-BISON CHALK BALL®

- 2oz. refillable chalk ball
- Very fine pulverized competition chalk
- Improves grip and prevents spills
- Convenient cord lock closure
- 100% natural magnesium carbonate with no artificial fillers
- Suppresses dust to keep climbing walls clean and gym air clear
- Exclusive mesh design available in white only



FUZBALZ™-BISON CHALK BALL®

- 2oz. refillable chalk ball
- Very fine pulverized competition chalk
- First ever chalk system that puts chalk into the hard to reach folds and gaps in a climber's grip
- Made of high strength fuzzy "looped" material that delivers twice the chalk coverage to your hand
- 100% natural magnesium carbonate with no artificial fillers



MEGA-BISON CHALK BALL®

- 2oz. ultra-dry premium chunky chalk
- Multi-uses, bouldering and crossfit
- Improves grip, prevents spills and lasts 5x longer than loose chalk
- Perfect for large groups using community chalk bags
- 100% natural magnesium carbonate with no artificial fillers
- Suppresses dust to keep climbing walls clean and gym air clear



JUMBO-BISON CHALK BALL®

- 4oz. ultra-dry premium chunky chalk
- Multi-uses, bouldering and crossfit
- Improves grip, prevents spills and lasts 5x longer than loose chalk
- Perfect for large groups using community chalk bags
- 100% natural magnesium carbonate with no artificial fillers
- Suppresses dust to keep climbing walls clean and gym air clear



BUCKET OF BALLS

- Ginger jar filled with (13) Mini-Bison Chalk Balls®
- Perfect for gyms
- Refillable 6 packs are available
- 100% natural magnesium carbonate with no artificial fillers or additives



B3 CHALK SET

- Prepackaged set
- Mega Dipper™ chalk bag
- Ultra light chalk bag belt
- Choice of Standard - Bison Chalk Ball® or Bison Block Chalk™



BISON BLOCK CHALK™

- 2oz. individual Block chalk - 8 piece pack
- 1lb case (36 - 2oz.) Block Chalk
- Specifically formulated for climbing
- Satisfies the trade climber in you
- 100% natural magnesium carbonate with no artificial fillers or additives



BIG DIPPER™

- Mid size chalk bag
- Brushed cotton
- Perfect for loose chalk, Mini or Reball™ - Bison Chalk Ball®



MEGA DIPPER™

- Large size chalk bag
- Constructed from durable Cordura™ fabric
- Perfect for loose chalk or the Standard - Bison Chalk Ball® or Fuzbalz™



CYLINDER™

- An old school bag with a modern look
- Rugged nylon blend fabrics
- Perfect for loose chalk or all Bison Chalk Ball®



CLIMBING TAPE

- 100% cotton
- Zinc oxide adhesive
- Tape is 1" wide
- 15 yard roll



ULTRA LIGHT CHALK BELT

- Light weight ¾" webbing
- Adjustable low profile side squeeze buckle
- 40" inches
- Available in black and assorted patterns



COMPETITION CHALK™

- 1 quart pouch of very fine pulverized powder chalk
- Convenient zip lock pouch
- Refills the Reball™ twice!
- Keep hands dry for a no slip grip
- 100% natural magnesium carbonate
- No artificial fillers or additives
- Baked at 400° for maximum absorbency



COMPETITION CHALK™

- ½ gallon jug of very fine pulverized powder chalk
- Durable, long lasting jug
- Convenient and reusable
- Great for weekends at the crag
- Keep hands dry for a no slip grip
- 100% natural magnesium carbonate
- No artificial fillers or additives
- Baked at 400° for maximum absorbency



COMPETITION CHALK™

- 1 gallon jug of very fine pulverized powder chalk
- Durable, long lasting jug
- Convenient and reusable
- Used by the world's premiere athletes
- Keep hands dry for a no slip grip
- 100% natural magnesium carbonate
- No artificial fillers or additives
- Baked at 400° for maximum absorbency



COMPETITION CHALK™

- 2 gallon bucket of very fine pulverized powder chalk
- Convenient and reusable
- Improves grip for climbing, gymnastics and weight lifting
- Keep hands dry for a no slip grip
- 100% natural magnesium carbonate
- No artificial fillers or additives
- Baked at 400° for maximum absorbency



VARIGRIP™

- Variable tension
- The only exerciser with the patented ability to adjust tension in each individual finger
- Create custom workouts to improve and build Endurance, Dexterity, Strength and Circulation
- Help build and maintain calluses



ADJUSTABLE COLLAR

- Contoured side squeeze buckle for greater strength and durability
- Also available in selected ribbon fashion appliqué patterns
- High quality jacquard webbing
- Solids and stripes also available in 1/2" width (Silver Hardware)
- **Grateful Dead Dancing Bear licensed patterns available in 1"**
- Sizes:
 - 1/2": 6"-9", 8"-13", 10"-15" (Solids and Stripes Only)
 - 3/4": 8"-13", 10"-15", 12"-20"
 - 1": 10"-16", 15"-24", 20"-32"



SLIP COLLAR

- Training slip collar
- High quality jacquard web, martingale style slip collar made for comfort and control
- Designed for on leash training only
- Sizes:
 - 3/4": 6"-12", 10"-16"
 - 1": 14"-20", 18"-28"



REVERSIBLE COLLAR

- Fashion by day, safety by night
- Patterned webbing reverses to super reflective appliqué tape
- Available in selected 1" patterns
- Sizes:
 - 1": 16", 18", 20", 22", 24"



HARNESS

- Roman style harness made of high quality jacquard webbing
- Side release buckle
- Sizes are measured by the pet's chest circumference
- Sizes:
 - 1/2": 9"-14", 12"-20"
 - 3/4": 14"-22", 16"-26"
 - 1": 16"-26", 20"-34", 32"-40"



FASHION ADJUSTABLE COLLAR

- Available in 38mm selected solids and patterns
- Contoured side squeeze buckle for greater strength and durability
- Sizes:
 - 1 1/2": 10"-16", 15"-24", 20"-32"



FASHION LIMITED SLIP COLLAR

- Training slip collar
- Available in 38mm selected solids and patterns
- Slip collar made for comfort and control
- For leash training only
- Sizes:
 - 1 1/2": 14"-20", 18"-28"



FASHION MARTINGALE COLLAR

- Training slip collar
- Available in 38mm selected solids and patterns
- Martingale made for comfort and control
- For leash training only
- Sizes:
 - 1 1/2": 14"-20", 18"-28"



LOPRO™ COLLAR

- High quality jacquard webbing
- Super subtle high tech buckle design
- Side squeeze buckle, requires two prong release
- Built with stainless steel and aluminum
- Comfort contoured shape
- Available in 30mm selected patterns and solids
- **Grateful Dead licensed patterns available**
- Sizes: 1 1/2": 15"-24", 20"-32"



LEAD

- High quality jacquard web with 8" handle
- 42 stitch bar-tack sewing for added strength and durability
- Powder coated steel swivel clip
- Also available in selected fashion ribbon patterns (3/4" & 1" only)
- **Grateful Dead licensed patterns available in 1" and 1 1/2" width**
- Sizes:
 - 1/2", 3/4", 1": 4ft. and 6ft.
 - 1 1/2": 6ft. only



STRETCH CONTROL LEAD

- High quality jacquard web with soft stretch handle made for comfort and control
- Stretch handle absorbs the shock of dog's pull
- Powder coated steel swivel clip
- Sizes:
 - 1": 4ft. and 6ft.



MOUNTAIN CLIP LEAD

- High quality jacquard web with 8" handle
- Climbers style for strength while providing trouble-free attachment and quick release
- Available in selected 1" patterns
- Sizes:
 - 1": 6ft.



SURVIVAL DOG LEAD

- Lead and collar in one
- Compact braid folds to fit easily into your pocket
- Natural stretch provides comfort in your hand
- 6 foot leash unties for 36 feet of 550 para-cord (2 - 18ft. strands)
- Available in 5 Color Assortments
- Also Available in Black Reflective Dog Lead



TREAT BAG

- Made from coated Cordura™ to help minimize absorption of oils from treats
- Draw cord closure top
- Tether loop with carabiner for easy attachment



FOLD-A-BOWL™

- Lightweight bowl folds inside itself for easy storage
- Clip attachment for belt or backpack
- Size: 1 liter



MESS-A-ROUND™

- Our most popular travel bowl
- Constructed from waterproof material with signature BISON® webbing around rim
- Reinforced opening to prevent spills
- **Grateful Dead Dancing Bear available in 2 liter black bowl only**
- Sizes 1 and 2 liter



MESSHAUL™ STANDARD

- Heavy duty travel water/food bowls
- Constructed from durable waterproof material with signature BISON® webbing around rim
- Reinforced opening to prevent spills
- Sizes 3 liter



MESSHAUL™ DELUXE

- Heavy duty travel water/food bowls
- Constructed from durable waterproof material with signature BISON® webbing around rim
- Reinforced opening to prevent spills
- Drawstring closure & zippered pocket for convenient storage
- Size: 3 liter

JOIN OUR PET COMMUNITY
@BISONDESIGNSLLC | #BISONDESIGNSPETS





BISON DESIGNS, LLC

735 S. LINCOLN ST. | LONGMONT, COLORADO 80501

TOLL FREE: 800-536-2476 | **LOCAL:** 303-678-9911

FAX: 303-678-9988 | **EMAIL:** SALES@BISONDESIGNS.COM

VISIT US: WWW.SHOPBISONDESIGNS.COM

RETAIL: WWW.BISONDESIGNS.COM

FOB: LONGMONT, COLORADO UPS/FEDEX GROUND

REMIT TO: BISON DESIGNS, LLC

PO BOX 912176 | DENVER, COLORADO 80291-2176

WHO WE ARE

Bison Designs was established by Brian Kelleghan in 1987 to make a unique webbing belt for rock climbers. With the goal to create unique products, Bison Designs has brought thousands of innovative belt and accessory designs to its outdoor sports customers and in the process creating new product markets.

Guided by our mission statement "Relentless Innovation and Creativity", Bison has launched many popular products and market categories.

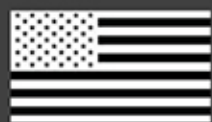
- Pictorial webbing
- Fashionable plastic and aluminum buckles for webbing
- Unique and artistic shaped aluminum accessories (including carabiners, bottle openers and more)
- Paracord survival accessories
- A wide selection of pet products
- The Bison Chalk Ball® and a variety of other chalk related products

Our first to market products are sold worldwide in thousands of Outdoor and Specialty stores found in Asia, Europe, South and Central America and the USA. We do business under the names of Bison Designs LLC, Bison Pets LLC, and Bison Belts LLC.

Bison is an American company focused on making much of our products in the USA. In addition Bison provides OEM manufacturing to offer Made in the USA products for other outdoor brands.

We continue to develop new and innovative products, adding to our hundreds of patents and copyrights. We support many organizations including Leave No Trace™, The Boy Scouts of America®, and many wounded veterans programs.

In everything we do, we are dedicated to product excellence, relentless innovation and above all else exemplary customer service.



Bison products are proudly handcrafted in Longmont, Colorado USA